

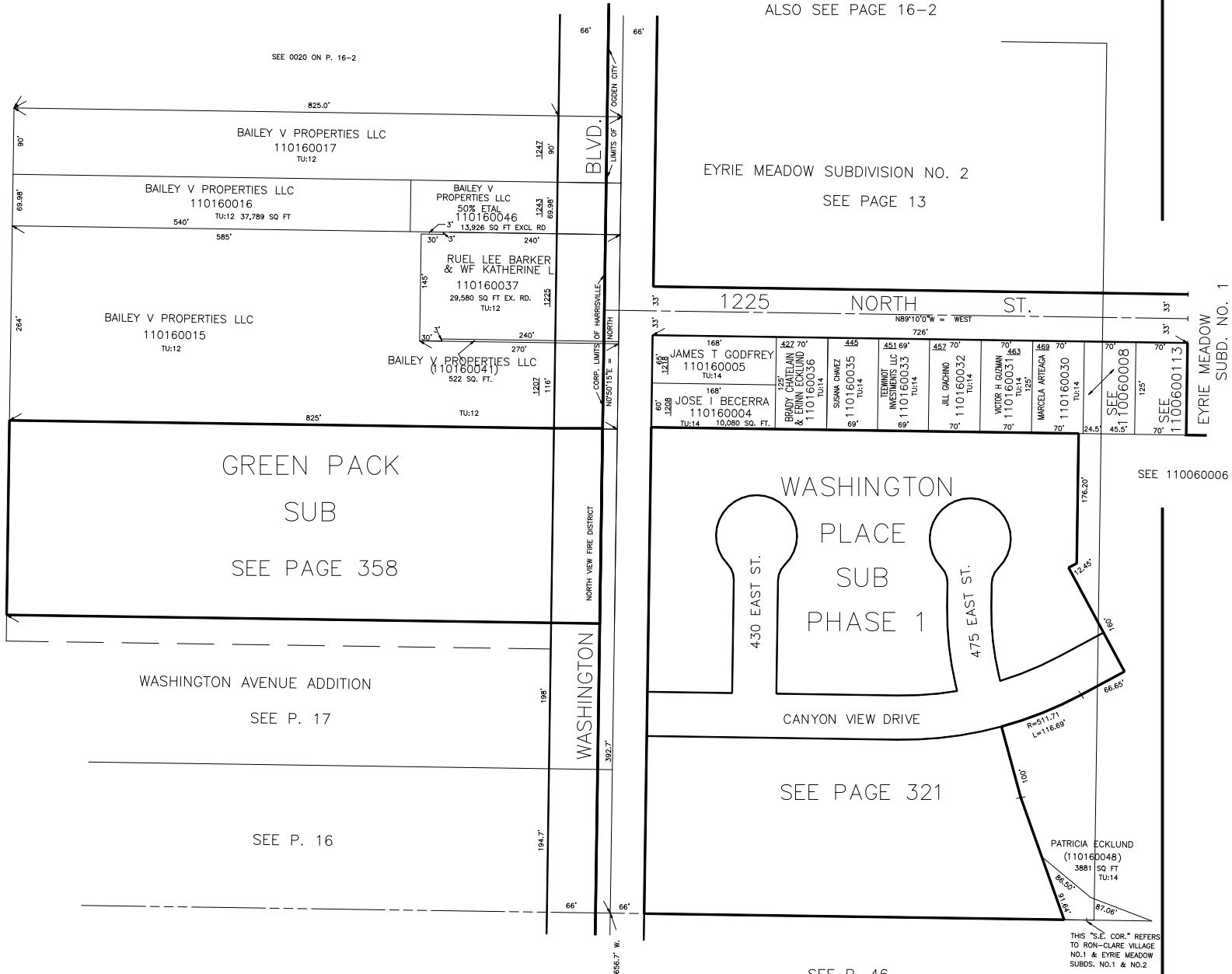
PART OF S.E. 1/4
SECTION 5, T.6N.,R.1W., S.L.B.&M.

IN THE TOWN OF HARRISVILLE & OGDEN CITY

TAXING UNIT: 12,14

SCALE 1" = 100'

PREFIX:11-016



ALSO SEE PAGE 16-2

EYRIE MEADOW SUBDIVISION NO. 2
SEE PAGE 13

1225 NORTH ST.

168' 127.5'	422 70' 168'	445' 127.5'	451 69' 127.5'	452 70' 127.5'	70' 127.5'	489 70' 127.5'	70' 127.5'	70' 127.5'	70' 127.5'
JAMES T GODFREY 110160005 TU:14	BRADY CHATELAIN & ERIN ECKLUND 1101600036 TU:14	SUSANA CHAVEZ 1101600035 TU:14	LEHNIOT INVESTMENTS LLC 1101600033 TU:14	JILL GACHINO 1101600032 TU:14	VICTOR H GUZMAN 1101600031 TU:14	MARCELA ARTEAGA 1101600030 TU:14	SEE 110060008	SEE 110060011	SEE 110060013
60' 128'	168' 10,080 SQ. FT.	89'	69'	70'	70'	24.5'	45.5'	70'	70'
JOSE I BECERRA 110160004 TU:14									

EYRIE MEADOW
SUBD. NO. 1
SEE P. 7

GREEN PACK
SUB
SEE PAGE 358

WASHINGTON
PLACE
SUB
PHASE 1

WASHINGTON AVENUE ADDITION
SEE P. 17

CANYON VIEW DRIVE
SEE PAGE 321

SEE P. 16

PATRICIA ECKLUND
(110160048)
3881 SQ FT
TU:14

THIS "S.E. COR." REFERS
TO RON-CLARE VILLAGE
NO.1 & EYRIE MEADOW
SUBDS. NO.1 & NO.2

SEE P. 46

RON-CLARE VILLAGE NO. 1